



Arayco[®]
MASTERS IN
CABLE MANAGEMENT



CATÁLOGO

MINI-GUIA



SCAN ME

DIGITALIZE-ME

The complete Trayco catalogue **Catálogo completo Trayco**

Consult our full range of cable support systems in the online catalogue. Or request a printed copy, a comprehensive overview bursting with brand new products and established values.

Veja a nossa gama completa de sistemas de caminhos de cabos no nosso catálogo online. Ou solicite uma versão impressa, uma visão de gama completa, cheia de novos produtos e novos princípios.

Mini.Guia

Fully screwless mounting / Montagem rápida sem parafusos	p.4 - 5
More than just a cable tray / Mais do que um caminho de cabos	p.6
Legend of the coatings / Gama de revestimentos	p.7
CT • Cable trays / Caminho de cabos	p.8 - 10
CT60 • Accessories cable trays / Acessórios para caminho de cabos	p.10-11
MT • Mesh trays / Caminho de cabos em varão	p.12
MT60 • Accessories mesh trays / Acessórios para caminho de cabos em varão	p.12-13
CLF • Caminho de cabos em escada para altas cargas	p.14 - 17
MS • Mounting systems / Sistemas de montagem	p.18 - 19
STRUT • Profiles and coupling pieces / Perfis e acessórios	p.20
CL • Cable ladders / Calha “tipo Escada”	p.21
THE BOX • Floor systems / Sistemas para pavimento	p.22-23

FULLY SCREWLESS MOUNTING* /

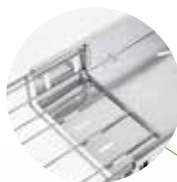
MONTAGEM RÁPIDA SEM PARAFUSOS*

**A CALHA DA TRAYCO GARANTE
A CONTINUIDADE ELÉTRICA
SEM NECESSIDADE DE
ACESSÓRIOS ADICIONAIS.**

**Clippable inner bracket
with integrated wire /
Suporte com encaixe rápido e varão
integrado**



**Interchangeable accessories
with perfect fitting /
Acessórios intermutáveis
com conexão perfeita**



**Sophisticated Design/
Design sofisticado**

**Extra strong base wires to carry the
highest possible load / Varão base extra
forte para suportar a maior carga possível**

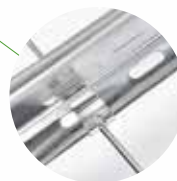
9

2

7

4

3



**Clippable accessory for
fixation of divider /
Acessórios de encaixe
para fixar o separador**



**Clippable covers with
overlay/ Tampas de encaixe com
sobreposição**

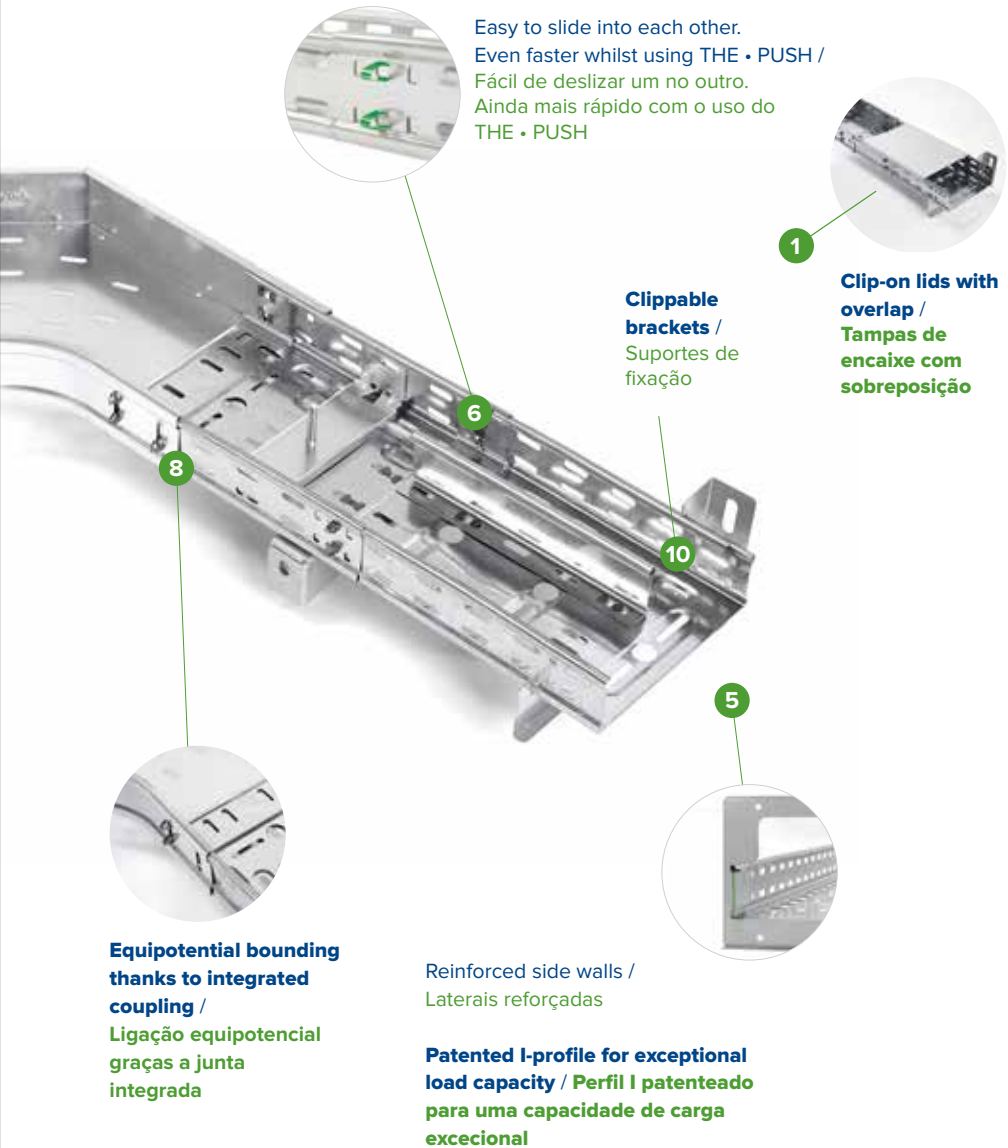
**One-click mounting /
Montagem com um clique**

* This setup can also be used with bolt and nut.

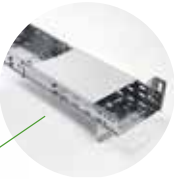
* Esta montagem também pode ser utilizada com parafusos e porcas.



**HAVE A LOOK AT THE
ADVANTAGES HERE /
VEJA AQUI AS VANTAGENS**



Easy to slide into each other.
Even faster whilst using THE • PUSH /
Fácil de deslizar um no outro.
Ainda mais rápido com o uso do
THE • PUSH



**Clip-on lids with
overlap /
Tampas de
encaixe com
sobreposição**

**Clippable
brackets /
Suportes de
fixação**

**Equipotential bounding
thanks to integrated
coupling /
Ligação equipotencial
graças a junta
integrada**

Reinforced side walls /
Laterais reforçadas

**Patented I-profile for exceptional
load capacity / Perfil I patenteado
para uma capacidade de carga
excecional**

MORE THAN JUST A CABLE TRAY / MAIS DO QUE APENAS UM CAMINHO DE CABOS

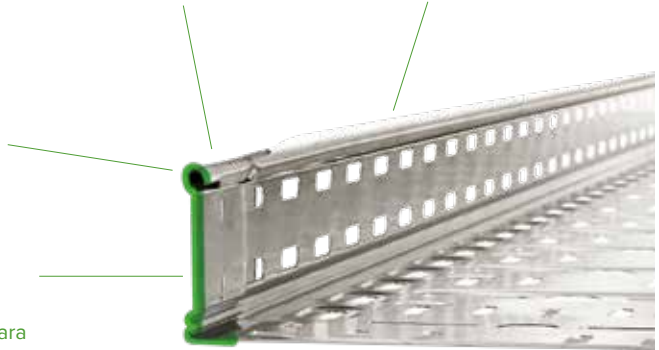


Patented I-profile / Perfil em I Patenteado

Rounded edge for additional safety / Rebordo arredondado para segurança adicional

Closed edge for more strength / Rebordo fechado para maior resistência

Strong design through base plate overlay and perforation / Design robusto graças à sobreposição e perfuração da base



Equipotential bonding thanks to integrated coupling/ Ligação equipotencial graças a junta integrada

Perforated base plate for cable ventilation / Base perfurada para ventilação dos cabos

YOUR OVERALL SUPPLIER FOR QUALITY AND COMPETITIVITY

The unique shape of Trayco cable trays results in a 50% higher capacity for specific applications compared to commonly used systems.

O SEU FORNECEDOR GLOBAL EM TERMOS DE QUALIDADE E COMPETITIVIDADE

A forma única dos caminhos de cabos Trayco resulta numa capacidade 50% superior para aplicações específicas em comparação com os sistemas normalmente utilizados.



LEGEND OF COATINGS

GAMA DE REVESTIMENTOS

Our Trayco products are available in different finishes

Os nossos produtos Trayco estão disponíveis em diferentes acabamentos.



PRE GALVANIZED
classe C2

Sendzimir | Sendzimir



DUPLEX
classe C5-M / C5-I

Duplex | Duplex



DIPPED GALVANIZED
classe C3 / C4

Hot-dip galvanised | Galvanizado imersão
a quente



STAINLESS STEEL
classe C5-I

Stainless Steel | Aço inoxidável



ELECTRO GALVANIZED
classe C1

Electrolytically galvanised | Galvanização
electrolítica



POLYESTER COATED
classe C4

Powder coating | Revestimento em pó



ULTRA GALVA
classe C3 / C4 / C5-M / C5-E

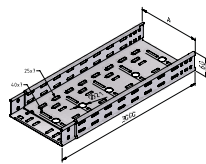
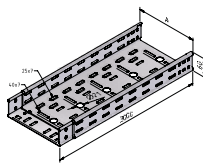
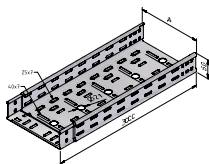
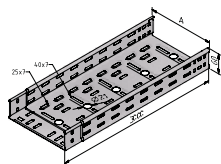
Ultra Galva | Ultra Galvanizado



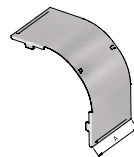
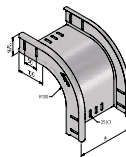
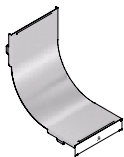
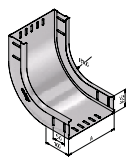
Also available in Ultra Galva
Também disponível em Ultra Galva

CT • CABLE TRAYS / CAMINHO DE CABOS EM CHAPA

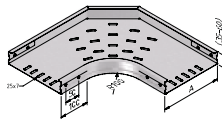
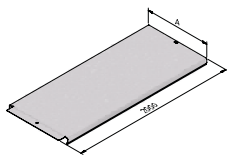
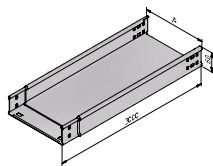
width
largura



A	CTLI60	CTI60-...-07	CTI60-...-10	CTI60-...-12
50	CTLI60-050-3PG 13870	CTI60-050-07-3PG 10926	-	-
75	CTLI60-075-3PG 13824	CTI60-075-07-3PG 10909	CTI60-075-10-3PG 10137	-
100	CTLI60-100-3PG 13825	CTI60-100-07-3PG 10910	CTI60-100-10-3PG 10138	-
150	CTLI60-150-3PG 13826	CTI60-150-07-3PG 11513	CTI60-150-10-3PG 10139	-
200	CTLI60-200-3PG 13827	CTI60-200-07-3PG 10911	CTI60-200-10-3PG 10140	-
300	CTLI60-300-3PG 13871	CTI60-300-07-3PG 10912	CTI60-300-10-3PG 10141	CTI60-300-12-3PG 14513
400	CTLI60-400-3PG 13872	-	CTI60-400-10-3PG 10131	CTI60-400-12-3PG 14903
500	CTLI60-500-3PG 15141	-	CTI60-500-10-3PG 13331	CTI60-500-12-3PG 14904
600	-	-	CTI60-600-10-3PG 13268	CTI60-600-12-3PG 14623



A	CT-RB	CT-CRB	CT-FB	CT-CFB
50	CT60-RB90-050-PG 10161	CT-CRB90-050-PG 10105	CT60-FB90-050-PG 10121	CT60-CFB90-050-PG 12545
75	CT60-RB90-075-PG 10162	CT-CRB90-075-PG 10106	CT60-FB90-075-PG 10122	CT60-CFB90-075-PG 12546
100	CT60-RB90-100-PG 10163	CT-CRB90-100-PG 10107	CT60-FB90-100-PG 10123	CT60-CFB90-100-PG 12547
150	CT60-RB90-150-PG 10164	CT-CRB90-150-PG 10108	CT60-FB90-150-PG 10124	CT60-CFB90-150-PG 12548
200	CT60-RB90-200-PG 10165	CT-CRB90-200-PG 10109	CT60-FB90-200-PG 10125	CT60-CFB90-200-PG 12368
300	CT60-RB90-300-PG 10166	CT-CRB90-300-PG 10110	CT60-FB90-300-PG 10126	CT60-CFB90-300-PG 12549
400	CT60-RB90-400-PG 10167	CT-CRB90-400-PG 12155	CT60-FB90-400-PG 10127	CT60-CFB90-400-PG 12550
500	CT60-RB90-500-PG 12122	CT-CRB90-500-PG 12156	CT60-FB90-500-PG 11471	CT60-CFB90-500-PG 12551
600	CT60-RB90-600-PG 12123	CT-CRB90-600-PG 12157	CT60-FB90-600-PG 11516	CT60-CFB90-600-PG 12552



CTNI60

CTNI60-050-3PG 14483
CTNI60-075-3PG 12823
CTNI60-100-3PG 13320
CTNI60-150-07-3PG 16899
CTNI60-200-07-3PG 16902
CTNI60-300-07-3PG 16905
CTNI60-400-3PG 13324
CTNI60-500-10-3PG 13325
CTNI60-600-10-3PG 13326

CT-C

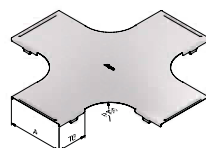
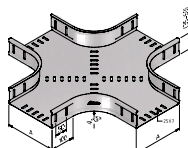
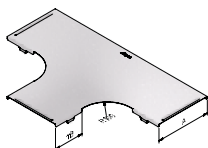
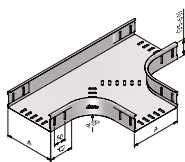
CT-C-050-2PG 10090
CT-C-075-2PG 10091
CT-C-100-2PG 10092
CT-C-150-2PG 10093
CT-C-200-2PG 10094
CT-C-300-2PG 10095
CT-C-400-2PG 10096
CT-C-500-2PG 10097
CT-C-600-2PG 10098

CT-B90

CT60-B90-050-PG 10070
CT60-B90-075-PG 10071
CT60-B90-100-PG 10072
CT60-B90-150-PG 10073
CT60-B90-200-PG 10074
CT60-B90-300-PG 10075
CT60-B90-400-PG 10076
CT60-B90-500-PG 10077
CT60-B90-600-PG 10078

CT-CB90

CT-CB90-050-PG 10927
CT-CB90-075-PG 10099
CT-CB90-100-PG 10100
CT-CB90-150-PG 10101
CT-CB90-200-PG 10102
CT-CB90-300-PG 10103
CT-CB90-400-PG 12149
CT-CB90-500-PG 12150
CT-CB90-600-PG 12151



CT-T

CT60-T-050-PG 10928
CT60-T-075-PG 10177
CT60-T-100-PG 10178
CT60-T-150-PG 10179
CT60-T-200-PG 10180
CT60-T-300-PG 10181
CT60-T-400-PG 10182
CT60-T-500-PG 10183
CT60-T-600-PG 10184

CT-CT

CT-CT-050-PG 10929
CT-CT-075-PG 10111
CT-CT-100-PG 10112
CT-CT-150-PG 10113
CT-CT-200-PG 10114
CT-CT-300-PG 10115
CT-CT-400-PG 12152
CT-CT-500-PG 12153
CT-CT-600-PG 12154

CT-X

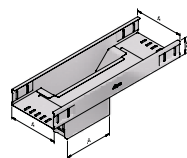
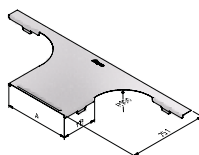
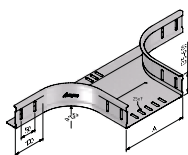
CT60-X-050-PG 10187
CT60-X-075-PG 10188
CT60-X-100-PG 10189
CT60-X-150-PG 10190
CT60-X-200-PG 10191
CT60-X-300-PG 10192
CT60-X-400-PG 10193
CT60-X-500-PG 12114
CT60-X-600-PG 12115

CT-CX

CT-CX-050-PG 15745
CT-CX-075-PG 15746
CT-CX-100-PG 15747
CT-CX-150-PG 15748
CT-CX-200-PG 15749
CT-CX-300-PG 15750
CT-CX-400-PG 15751
CT-CX-500-PG 15752
CT-CX-600-PG 15753

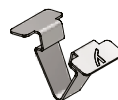
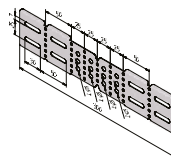
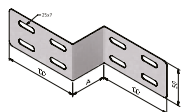
CT • CABLE TRAYS / CAMINHO DE CABOS EM CHAPA

width
largura



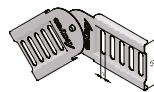
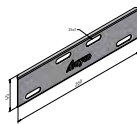
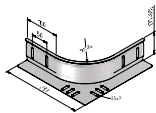
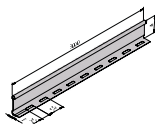
	CT-BR	CT-CBR	CT-VBRS
50	CT60-BR-050-PG 10080	CT-CBR-050-PG 12571	-
75	CT60-BR-075-PG 10081	CT-CBR-075-PG 12572	-
100	CT60-BR-100-PG 10082	CT-CBR-100-PG 12369	-
150	CT60-BR-150-PG 10083	CT-CBR-150-PG 12573	-
200	CT60-BR-200-PG 10084	CT-CBR-200-PG 12574	CT60-VBRS-200-PG 13126
300	CT60-BR-300-PG 10085	CT-CBR-300-PG 12575	CT60-VBRS-300-PG 13127
400	CT60-BR-400-PG 10086	CT-CBR-400-PG 12576	CT60-VBRS-400-PG 13128
500	CT60-BR-500-PG 10087	CT-CBR-500-PG 12577	-
600	CT60-BR-600-PG 10088	CT-CBR-600-PG 12578	-

CT60 • ACCESSORIES CABLE TRAYS / ACESSÓRIOS DE CAMINHO DE CABOS EM CHAPA



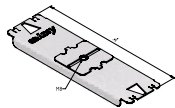
CT-JBP (one size)	CT-RP	BN06-...-EG	CT-MFCP	CT-PUSH (one size)
CT-JBP-UG 17165	-	BN06-10-EG 10197	-	PUSH-SS 15138
-	-	BN06-20-EG 10198	-	-
-	-	-	-	-
-	CT60-RP-050-PG 10168	-	CT60-MCFP-PG 14810	-
-	CT60-RP-100-PG 10169	-	-	-
-	CT60-RP-200-PG 10170	-	-	-

width
largura



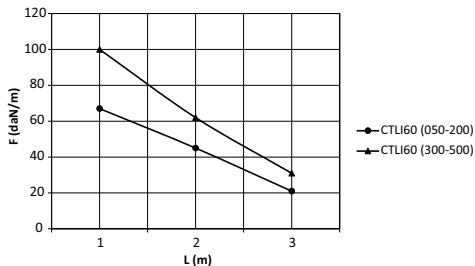
A	CT-D	CT-BR	CT-J	CT-VH
10	-	-	-	-
20	-	-	-	-
50	-	-	-	-
60	CT60-D-3PG 10219	CT60-BR-PG 10089	CT60-J-PG 10147	CT60-VH-UG 19016
100	-	-	-	-
200	-	-	-	-

Mounting / Suporte

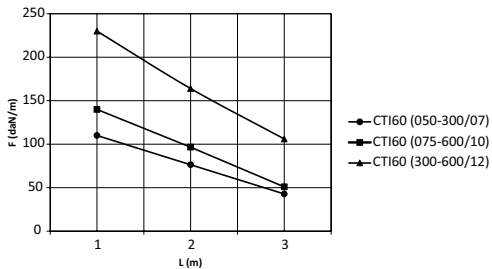


A	CT-IB
100	CT60-IB-100-UG 17175
150	CT60-IB-150-UG 17176
200	CT60-IB-200-UG 17177
300	CT60-IB-300-UG 17178
400	CT60-IB-400-UG 17179

CTLI60

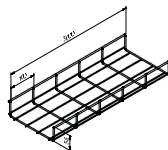
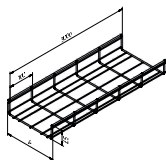


CTI60



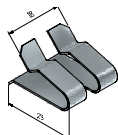
MT • MESH TRAYS / CAMINHO DE CABOS EM VARÃO

width
largura

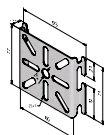


A	MT60	MTL60
50	MT60-050-3EG 12264	MTL60-050-3EG 14143
75	-	MTL60-075-3EG 16675
100	MT60-100-3EG 10353	MTL60-100-3EG 14148
150	MT60-150-3EG 10358	MTL60-150-3EG 14153
200	MT60-200-3EG 10359	MTL60-200-3EG 14158
300	MT60-300-3EG 10360	MTL60-300-3EG 14163
400	MT60-400-3EG 10361	-
500	MT60-500-3EG 10347	-
600	MT60-600-3EG 10348	-

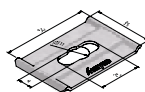
MT60 • ACCESSORIES MESH TRAYS / ACESSÓRIOS DE CALHA DE VARÃO



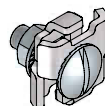
MT-DCL



MT-MP

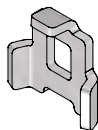


MT-FB

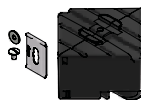


MT-J

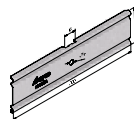
one size	MT-DCL-EG 16597	MT-MP-PG 10362	MT-FB-PG 13319	MT-J-PG 10350
----------	-------------------	------------------	------------------	-----------------



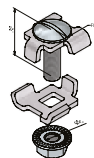
MT-MC



CUBE



MT60-JCL

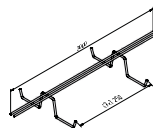
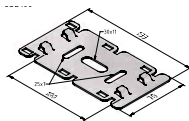
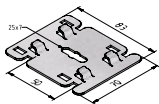


MT-JF

one size	MT-MC-UG 17342	CUBE-SQ-110-PE 17186	MT60-JCL-PG 14314	MT-JF-EG 16969
----------	------------------	------------------------	---------------------	------------------

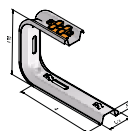
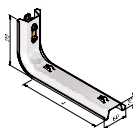
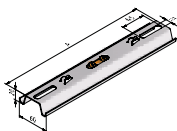
Mounting / Suspensão central

width
largura



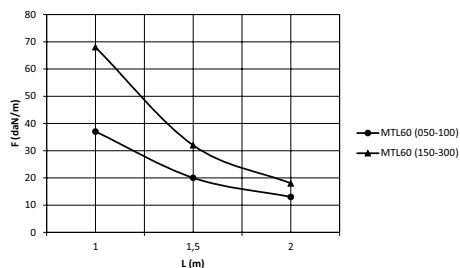
A	MT-CSB050	MT-CSB100	MTW55
50	MT-CSB050-PG 12389	MT-CSB100-PG 12632	MTW55-200-2PG 17242
100	-	-	-
150	-	-	-
200	-	-	-
300	-	-	-
400	-	-	-
500	-	-	-
600	-	-	-

width
largura

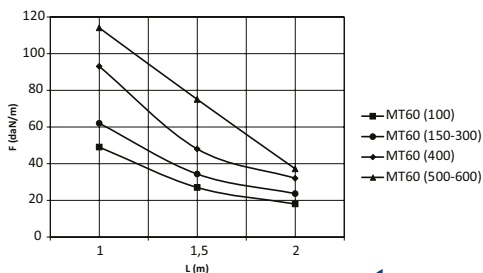


A	MT-FWSBO	MT-LBO	MT-CBO
50	-	-	-
100	-	MT-LBO120-100-UG 17014	MT-CBO170-100-UG 17009
150	MT-FWSBO-150-UG 17153	MT-LBO120-150-UG 17015	MT-CBO170-150-UG 17010
200	MT-FWSBO-200-UG 17154	MT-LBO120-200-UG 17016	MT-CBO170-200-UG 17011
300	MT-FWSBO-300-UG 17155	MT-LBO120-300-UG 17017	MT-CBO170-300-UG 17012
400	MT-FWSBO-400-UG 17156	MT-LBO120-400-UG 17018	MT-CBO170-400-UG 17013
500	MT-FWSBO-500-UG 17157	-	-
600	MT-FWSBO-600-UG 17158	-	-

MTL60



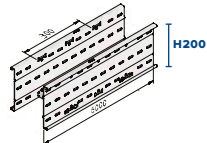
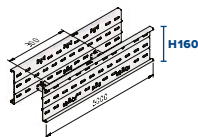
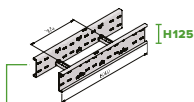
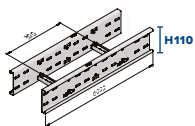
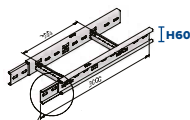
MT60





Cable ladders / Escada de cabos

width
largura

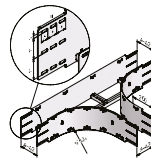
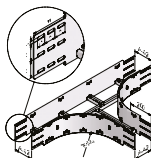
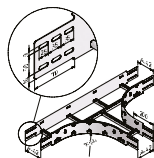
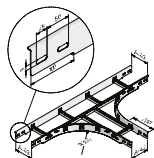


NOVO - Calha em Escada de altura 125 agora disponível na nossa gama de produtos standard!

A ↔	CLF160	CLF110	CLF160	CLF200
	H60	H110	H160	H200
200	CLF160-0200-10-3PG 17368	CLF110-0200-15-3PG 17373	CLF160-0200-20-6UG 17378	CLF200-0200-20-6UG 17385
300	CLF160-0300-10-3PG 17369	CLF110-0300-15-3PG 17374	CLF160-0300-20-6UG 17379	CLF200-0300-20-6UG 17386
400	CLF160-0400-10-3PG 17370	CLF110-0400-15-3PG 17375	CLF160-0400-20-6UG 17380	CLF200-0400-20-6UG 17387
500	CLF160-0500-10-3PG 17371	CLF110-0500-15-3PG 17376	CLF160-0500-20-6UG 17381	CLF200-0500-20-6UG 17388
600	CLF160-0600-10-3PG 17372	CLF110-0600-15-3PG 17377	CLF160-0600-20-6UG 17382	CLF200-0500-20-6UG 17389
800	-	-	CLF160-0800-20-6UG 17383	CLF200-0800-20-6UG 17390
1000	-	-	CLF160-1000-20-6UG 17384	CLF200-1000-20-6UG 17391

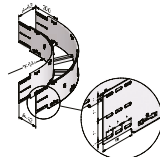
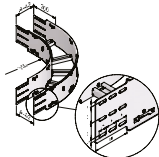
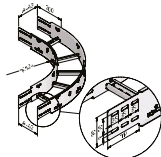
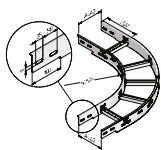
T

breedte
largeur
breite
width
ancho
largura



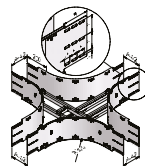
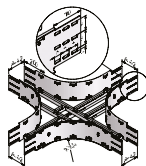
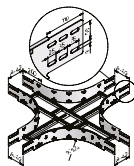
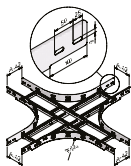
A ↔	CLF160	CLF110	CLF160	CLF200
	H60	H110	H160	H200
200	CLF160-T-0200-UG 18511	CLF110-T-0200-UG 18625	CLF160-T-0200-UG 17696	CLF200-T-0200-UG 17814
300	CLF160-T-0300-UG 18512	CLF110-T-0300-UG 18626	CLF160-T-0300-UG 17697	CLF200-T-0300-UG 17815
400	CLF160-T-0400-UG 18513	CLF110-T-0400-UG 18627	CLF160-T-0400-UG 17698	CLF200-T-0400-UG 17816
500	CLF160-T-0500-UG 18514	CLF110-T-0500-UG 18628	CLF160-T-0500-UG 17699	CLF200-T-0500-UG 17817
600	CLF160-T-0600-UG 18515	CLF110-T-0600-UG 18629	CLF160-T-0600-UG 17700	CLF200-T-0600-UG 17818

B90



CLFI60	CLFI110	CLF160	CLF200
H60	H110	H160	H200
CLFI60-B90-0200-UG 18488	CLFI110-B90-0200-UG 18594	CLF160-B90-0200-UG 17665	CLF200-B90-0200-UG 17783
CLFI60-B90-0300-UG 18489	CLFI110-B90-0300-UG 18595	CLF160-B90-0300-UG 17666	CLF200-B90-0300-UG 17784
CLFI60-B90-0400-UG 18490	CLFI110-B90-0400-UG 18596	CLF160-B90-0400-UG 17667	CLF200-B90-0400-UG 17785
CLFI60-B90-0500-UG 18491	CLFI110-B90-0500-UG 18597	CLF160-B90-0500-UG 17668	CLF200-B90-0500-UG 17786
CLFI60-B90-0600-UG 18492	CLFI110-B90-0600-UG 18598	CLF160-B90-0600-UG 17669	CLF200-B90-0600-UG 17787
-	-	-	-
-	-	-	-

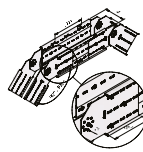
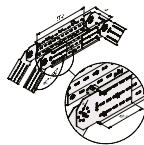
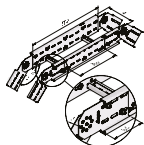
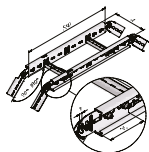
X




CLFI60	CLFI110	CLF160	CLF200
H60	H110	H160	H200
CLFI60-X-0200-UG 18558	CLFI110-X-0200-UG 18640	CLF160-X-0200-UG 17711	CLF200-X-0200-UG 17829
CLFI60-X-0300-UG 18559	CLFI110-X-0300-UG 18641	CLF160-X-0300-UG 17712	CLF200-X-0300-UG 17830
CLFI60-X-0400-UG 18560	CLFI110-X-0400-UG 18642	CLF160-X-0400-UG 17713	CLF200-X-0400-UG 17831
CLFI60-X-0500-UG 18561	CLFI110-X-0500-UG 18643	CLF160-X-0500-UG 17714	CLF200-X-0500-UG 17832
CLFI60-X-0600-UG 18562	CLFI110-X-0600-UG 18644	CLF160-X-0600-UG 17715	CLF200-X-0600-UG 17833

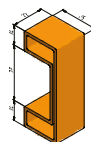
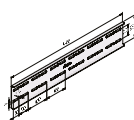
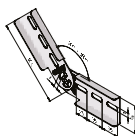
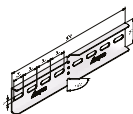
VB / SB

breedte
largeur
breite
width
ancho
largura

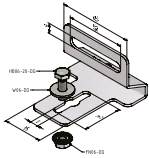


 A	CLF160	CLF110	CLF160	CLF200
	H60	H110	H160	H200
200	CLF160-RFB-0200-UG 18573	CLF110-RFB-0200-UG 18645	CLF160-RFB-0200-UG 17758	CLF200-RFB-0200-UG 17834
300	CLF160-RFB-0300-UG 18754	CLF110-RFB-0300-UG 18646	CLF160-RFB-0300-UG 17759	CLF200-RFB-0300-UG 17835
400	CLF160-RFB-0400-UG 18755	CLF110-RFB-0400-UG 18647	CLF160-RFB-0400-UG 17760	CLF200-RFB-0400-UG 17836
500	CLF160-RFB-0500-UG 18756	CLF110-RFB-0500-UG 18648	CLF160-RFB-0500-UG 17761	CLF200-RFB-0500-UG 17837
600	CLF160-RFB-0600-UG 18757	CLF110-RFB-0600-UG 18649	CLF160-RFB-0600-UG 17762	CLF200-RFB-0600-UG 17838

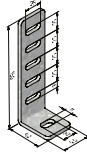
hoogte
hauteur
höhe
height
altura
altura



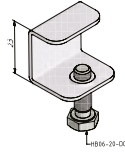
H	CLF(H)-HH	CLF(H)-VH	CLF(H)-JLS	CLF(H)-PC
60	CLF160-HH-UG 18590	CLF160-VH-UG 18583		CLF160-PC-PV 17129
110	CLF110-HH-UG 18661	CLF110-VH-UG 18658	CLF110-JLS-UG 18665	CLF110-PC-PV 17130
160	CLF160-HH-UG 17775	CLF160-VH-UG 17772	CLF160-JLS-UG 17781	CLF160-PC-PV 17131
200	CLF200-HH-UG 17851	CLF200-VH-UG 17848	CLF200-JLS-UG 17855	CLF200-PC-PV 17132



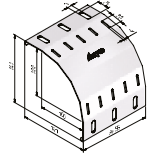
CLF-BC



CLF-DBL-0-100



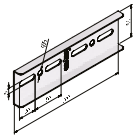
CLF-CCL



CLF-VCSPL

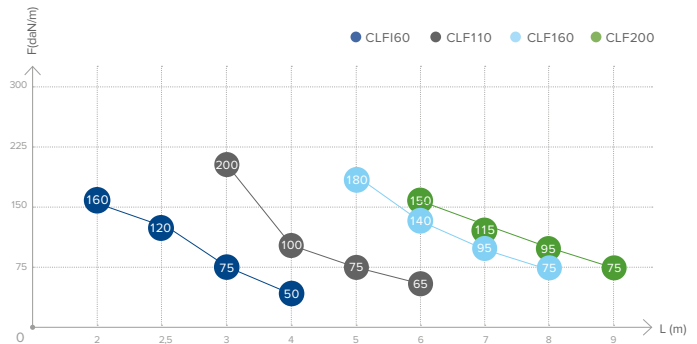
CLF-BC-UG 17561	CLF-DBL-0-100-DG 17570	CLF-CCL-UG 17575	CLF-VCSPL-0200-UG 17580
-	-	-	CLF-VCSPL-0300-UG 17582
-	-	-	CLF-VCSPL-0400-UG 17584
-	-	-	CLF-VCSPL-0500-UG 17586
-	-	-	CLF-VCSPL-0600-UG 17588

Load performance | Desempenho em carga



CLFI-J

CLFI60-J-UG 18592
CLFI110-J-UG 18663
CLFI160-J-UG 17779
CLFI200-J-UG 17853

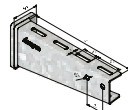
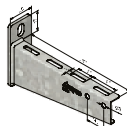
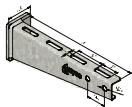
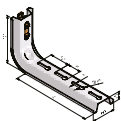


Tested according to IEC 61537 (test type III for 3m lengths, test type II for 6m lengths)

Testado de acordo com a norma IEC 61537 (tipo de ensaio III para comprimentos de 3 m, tipo de ensaio II para comprimentos de 6 m)

Wall / Suporte de Parede

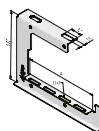
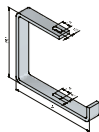
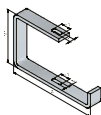
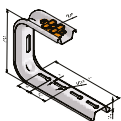
width
largura



A	LBO120	WB15	WB25	WB35
100	LBO120-100-UG 17042	WB15-0100-DG 14241	WB25-0100-DG 14947	WB35-0100-DG 13906
150	LBO120-150-UG 17043	WB15-0150-DG 14242	WB25-0150-DG 14948	-
200	LBO120-200-UG 17044	WB15-0200-DG 14243	WB25-0200-DG 14949	WB35-0200-DG 14367
300	LBO120-300-UG 17045	WB15-0300-DG 14244	WB25-0300-DG 14950	WB35-0300-DG 13907
400	LBO120-400-UG 17046	WB15-0400-DG 14245	WB25-0400-DG 14951	WB35-0400-DG 13908
500	LBO120-500-UG 17047	WB15-0500-DG 14246	WB25-0500-DG 14952	WB35-0500-DG 16655
600	LBO120-600-UG 17048	WB15-0600-DG 14247	WB25-0600-DG 14989	WB35-0600-DG 16656

Ceiling / Suporte de Teto

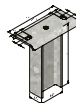
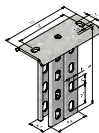
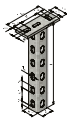
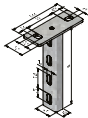
width
largura



A	CBO170	CB130	CB190	CT-CBCL
50	-	-	-	CT60-CBCL-050-PG 14178
75	-	CB130-075-EG 17083	CB190-075-EG 17089	CT60-CBCL-075-PG 14179
100	CBO170-100-UG 16999	CB130-100-EG 17084	CB190-100-EG 17090	CT60-CBCL-100-PG 17180
150	CBO170-150-UG 17000	CB130-150-EG 17085	CB190-150-EG 17091	CT60-CBCL-150-PG 17181
200	CBO170-200-UG 17001	CB130-200-EG 17086	CB190-200-EG 17092	CT60-CBCL-200-PG 14182
300	CBO170-300-UG 17002	CB130-300-EG 17087	CB190-300-EG 17093	CT60-CBCL-300-PG 14186
400	CBO170-400-UG 17003	CB130-400-EG 17088	CB190-400-EG 17094	CT60-CBCL-400-PG 14795

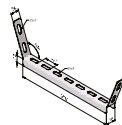
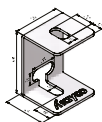
Pendant / Pendurais

width
largura



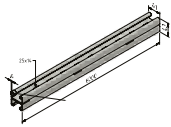
A	P21	P41-3W	P82	PI
200	P21-0200-DG 10266	-	-	-
300	P21-0300-DG 10267	P41-3W-0300-DG 18882	-	-
400	P21-0400-DG 10268	P41-3W-0400-DG 18883	P82-0400-DG 10242	PI-0400-DG 10317
500	P21-0500-DG 10269	P41-3W-0500-DG 18884	-	-
600	P21-0600-DG 10270	P41-3W-0600-DG 18885	P82-0600-DG 10243	PI-0600-DG 10318
800	P21-0800-DG 10271	P41-3W-0800-DG 18886	P82-0800-DG 10244	PI-0800-DG 10319
1000	P21-1000-DG 10272	P41-3W-1000-DG 18887	P82-1000-DG 10245	PI-1000-DG 10320
1200	P21-1200-DG 10273	P41-3W-1200-DG 18888	P82-1200-DG 10246	PI-1200-DG 10321
1500	-	-	P82-1500-DG 10247	PI-1500-DG 10322
1800	-	-	-	PI-1800-DG 10323
2000	-	-	-	PI-2000-DG 10324

Accessories / Acessórios

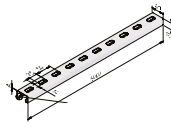


	CB	SDB	SDB-M10	SDB250
one size	CB-PG 10200	SDB-UG 17185	SDB-M10-UG 19030	SDB250-PG 12822

Supporting profile | Perfil de suporte



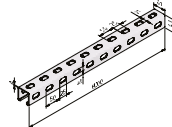
SP41-42-25-6DG | 19573



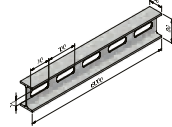
SP41-21-25-6UG | 18417



SP41-82-25-6DG | 12338



SP41-41-3W-25-6UG | 18428



SPI80-6DG | 18850

Accessories / Acessórios



CP-P-1-DG
10212



CP-P-4-DG
10213



CP-FP1-DG
10201



CP-L-2-DG
10209



CP-L-3-1-DG
19447



CP-P-2V2H-DG
19453



CP-UV-82-DG
19451



CP-VH-DG
19450



CP-BRR-DG
19457



CP-BRL-DG
19458



CP-L-4A90-DG
13810



CPL-I-41-DG
19463



CP-U25-DG
19460



CP-T-DG
10215



CP-PL3-DG
10214



SPI80-BR-DG
19048



SPI80-FWSB-DG
19046



SPI80-HHP-05-DG
19379



CP-L-2V2H-DG
19454



CP-U-41-DG
10216



CP-I-21-41-DG
19459



CP-Z-21-DG
19448



CP-U-21-DG
19449



CP-I-U63-DG
19464



SPI80-HP-05-DG
19370

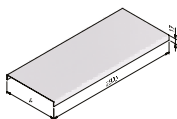
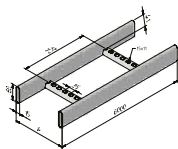


SPI80-HP-10-DG
19375



SPI80-J-DG
19042

width
largura

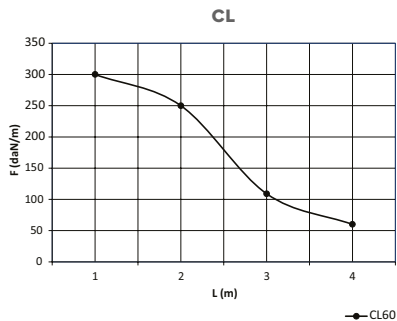


A
←→

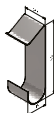
CL60

CL-C

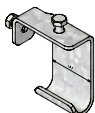
200	CL60-200-6DG 10041	CL-C-200-25-UG 19347
300	CL60-300-6DG 10042	CL-C-300-25-UG 19348
400	CL60-400-6DG 10043	CL-C-400-25-UG 19349
500	CL60-500-6DG 10044	CL-C-500-25-UG 19350
600	CL60-600-6DG 10045	CL-C-600-25-UG 19351



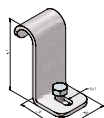
Accessories / Acessórios



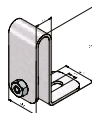
CL60-CCL-SS
10014



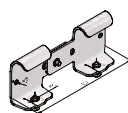
CL60-BR-DG
10008



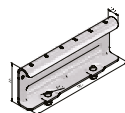
C60-BC-DG
10006



CL60-DB-DG
10015

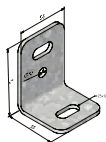


CL60-VH-DG
10057

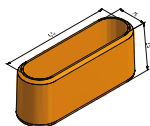


CL60-J-DG
10033

Mounting / Suporte



CL60-FB-DG
10017



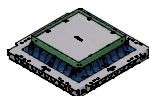
CL60-PC-PVC
10046

SCREED FLOOR PAVIMENTO EM BETONILHA

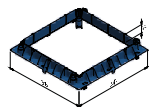
Configure your Trayco® floor system in 5 easy steps
Configure o seu sistema de pavimento Trayco® em 5 passos simples

1 Determine the height / Choose your box Definir a altura / Selecionar a caixa

THE · BOX FS-BOX28/38/48



BOX-SQ-260-300
BOX-SQ-260-400
BOX-SQ-260-500

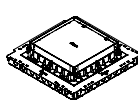


BOX-ACC-AFF-SQ

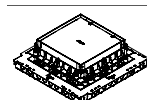
1 bis:

Determine the number of blue fixed frames - standard 1 frame included

Definir as molduras fixas - 1 moldura incluída como padrão



1x



2x



3x

	Min H (mm)	Max H (mm)	Min H (mm)	Max H (mm)	Min H (mm)	Max H (mm)
BOX28	66	100	100	134	134	168
BOX38	76	110	110	144	144	178
BOX48	86	120	120	154	154	188

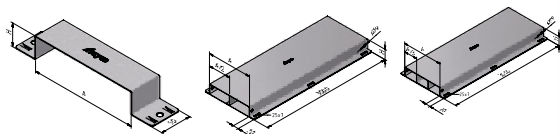
Each blue frame +34mm / Cada moldura azul +34mm

Min H = minimal screed height / Min H = Altura mínima da betonilha

Max H = maximal screed height / Max H = Altura máxima da betonilha

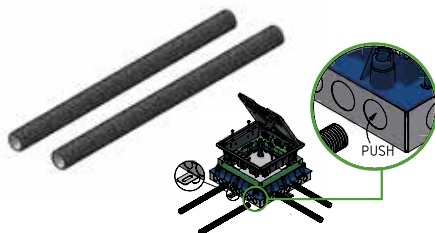
2 Determine the connection between the service units Definir a ligação entre as unidades de serviço

FLOOR DUCT
CONDUTAS POR BAIXO DO PAVIMENTO



FS-FD(L) 28/38/48 (2 of 3 compartments)
FS-FD(L) 28/38/48 (2 ou 3 compartimentos)

FLEXIBLE TUBES
TUBOS FLEXÍVEIS

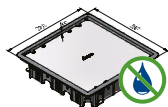


3 Choose your hinged cover Escolha a sua tampa articulada

Polyamide

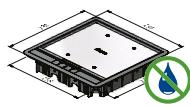
carpet edge only / apenas o
rebordo da aba saliente

BLIND COVER
TAMPA CEGA



BC-CE-SQ-260-PA

HINGED COVER
TAMPA ARTICULADA



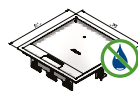
HC-CE-SQ-260-PA



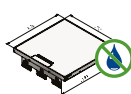
STAINLESS STEEL / AÇO INOXIDÁVEL

CARPET EDGE

REBORDO DA ABA SALIENTE



HC-CE-SQ-260-SS

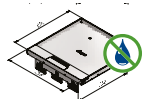


HC-CE-PL-SQ-260-SS

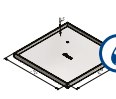
TILE FRAME

MOLDURA DE ARO EMBUTIDO

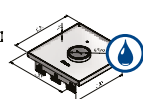
ACC-CER-WP



HC-SQ-260-SS

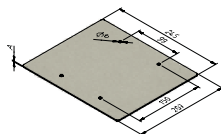


BC-SQ-260-WP

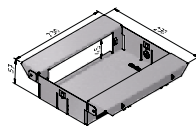


TF-SQ-260-WP

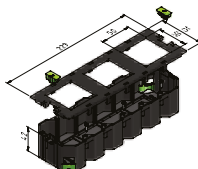
4 Select your accessories Selecione os seus acessórios



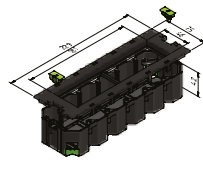
HC-ACC-FILL



FS-AC-LOW



FS-AC-HO-260-3-50



FS-AC-HO-260-4-45

5 Ready! Pronto!

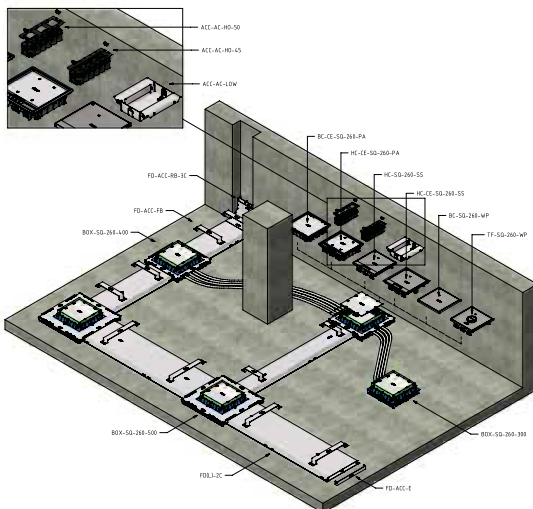


QUESTIONS? We are there to
guide you through the flow.

PERGUNTAS? Teremos todo
o gosto em guiá-lo através do
processo.

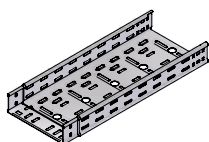
Check our catalogue for the
full product range.

Consulte o nosso catálogo para ver a
gama completa de produtos.

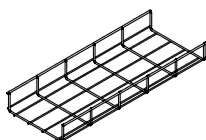


Discover our complete Trayco product range

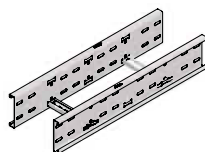
Descubra o nosso catálogo Trayco completo



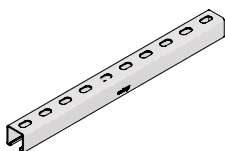
CT • CABLE TRAYS /
CAMINHO DE CABOS



MT • MESH TRAYS /
CAMINHO DE
CABOS EM VARÃO



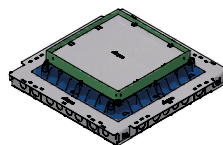
CL • CABLE LADDERS /
CAMINHO DE CABOS TIPO
ESCALADA



MS • MOUNTING
SYSTEMS / SISTEMAS DE
INSTALAÇÃO



WM • WIRE MOUNTING /
SUSPENSÃO POR CABO



FS • FLOOR SYSTEMS /
SISTEMAS DE PAVIMENTO



FR • FIRE RESISTANT /
RESISTENTE AO FOGO



SR • SPECIAL REQUESTS /
PRODUTOS PERSONALIZADOS

www.trayco.eu

TABELA ATADO

ARTIGO	CÓDIGO	ATADO MÍN./METROS
CT-C-050-2PG	10090	40
CT-C-075-2PG	10091	40
CT-C-100-2PG	10092	40
CT-C-150-2PG	10093	20
CT-C-200-2PG	10094	20
CT-C-300-2PG	10095	12
CT-C-400-2PG	10096	12
CT-C-500-2PG	10097	12
CT-C-600-2PG	10098	12
CTI60-050-07-3PG	10926	36
CTI60-075-07-3PG	10909	36
CTI60-075-10-3PG	10137	36
CTI60-100-07-3PG	10910	24
CTI60-100-10-3PG	10138	24
CTI60-150-07-3PG	11513	18
CTI60-150-10-3PG	10139	18
CTI60-200-07-3PG	10911	18
CTI60-200-10-3PG	10140	18
CTI60-300-07-3PG	10912	18
CTI60-300-10-3PG	10141	18
CTI60-300-12-3PG	14513	18
CTI60-400-10-3PG	10131	12
CTI60-400-12-3PG	14903	12
CTI60-500-10-3PG	13331	12
CTI60-500-12-3PG	14904	12
CTI60-600-10-3PG	13268	12
CTI60-600-12-3PG	14623	12
CTLI35-050-3PG	13818	54
CTLI35-075-3PG	13819	60
CTLI35-100-3PG	13820	24
CTLI35-150-3PG	13821	30
CTLI35-200-3PG	13822	18
CTLI35-300-3PG	13823	18
CTLI35-400-3PG	14831	30
CTLI60-050-3PG	13870	36
CTLI60-075-3PG	13824	36
CTLI60-100-3PG	13825	24
CTLI60-150-3PG	13826	18
CTLI60-200-3PG	13827	18
CTLI60-300-3PG	13871	18
CTLI60-400-3PG	13872	12
CTNI60-500-10-3PG	13325	12
CTNI60-600-10-3PG	13326	12
CTNI60-050-3PG	14483	36
CTNI60-075-3PG	12823	36
CTNI60-100-3PG	13320	24
CTNI60-150-3PG	13321	18
CTNI60-200-3PG	13322	18
CTNI60-300-3PG	13323	18
CTNI60-400-3PG	13324	12

ARTIGO	CÓDIGO	ATADO MÍN./METROS
MT35-100-3EG	10351	36
MT35-150-3EG	10352	36
MT35-200-3EG	10355	30
MT35-350-3EG	10356	18
MT35-450-3EG	10357	60
MT35-550-3EG	10346	36
MT60-050-3EG	12264	12
MT60-100-3EG	10353	12
MT60-150-3EG	10358	12
MT60-200-3EG	10359	12
MT60-300-3EG	10360	12
MT60-400-3EG	10361	12
MT60-500-3EG	10347	36
MT60-600-3EG	10348	36
MTL35-100-3EG	15077	36
MTL35-150-3EG	15078	30
MTL35-200-3EG	15079	60
MTL35-350-3EG	15080	36
MTL60-050-3EG	14143	12
MTL60-100-3EG	14148	12
MTL60-150-3EG	14153	12
MTL60-200-3EG	14158	30
MTL60-300-3EG	14163	60
MTL35-300-3EG	15595	12
SP41-21-15-3PG	10280	12
MTL60-050-3SS304	14390	18
MTL60-100-3SS304	14391	36
MTL60-150-3SS304	14392	24
MTL60-200-3SS304	14393	18
CTLI60-200-3UG	17121	12
CTLI60-050-3DG	14284	12
CTLI60-100-3DG	13965	12
CTLI60-200-3DG	14039	12
CTLI60-400-3DG	14076	12
CTLI60-500-3DG	16667	12
CTLI60-300-3DG	14042	12
MT110-400-3EG	15284	12
MT110-400-3DG	15552	12
MT110-300-3EG	14661	12
MT110-300-3DG	15302	12
CTI10-300-12-3PG	11567	12
CTLI60-500-3PG	15141	12
CTNI60-150-07-3PG	16899	18
CTNI60-200-07-3PG	16902	18
CTNI60-300-07-3PG	16905	18
MTL60-075-3EG	16675	12
CLFI60-0200-10-3PG	17368	3
CLFI60-0300-10-3PG	17369	3
CLFI60-0400-10-3PG	17370	3
CLFI60-0500-10-3PG	17371	3



MORGADO & CA, SA
ESTRADA EXTERIOR DA CIRCUNVALAÇÃO, 3558 / 3560
4435-186 RIO TINTO
TEL 229 770 600 • FAX 229 770 699

COORDENADAS
N41 180946"
W8,578015"

GERAL @ MORGADOCL.PT • WWW.MORGADOCL.PT

DELEGAÇÃO CENTRO
VALES DA PEDRULHA
APARTADO 8057
3025-901 COIMBRA
TEL 239 497 220 • FAX 239 497 229

DELEGAÇÃO SUL
ALAMEDA DOS OCEANOS, N.º5 - ESC.4
1990-207 LISBOA
TEL 219 898 750 • FAX 219 898 759

